



St. Gregory Catholic School



Principal: Charlene Landry-Kyte

Admin Assistant: Rhonda McLean

Superintendent of School Effectiveness: Erin Walker

School Website: <http://schools.alcdsb.on.ca/greg/>

Catholic School Council Chair: Nikki Crenna

Trustee: Gregory Speagle



Follow
St. Gregory Catholic School on Twitter
@alcdsb_greg

Some Important Dates

February 19—Catholic School Council Meeting
Kinder Registration Info Night

February 25—Terrific Kids
Shrove Tuesday Lunch
Parent Teacher Interviews



February 26—Ash Wednesday Mass
March 1— Sunday Family Mass
March 5— Duffle Bag Theatre Presentation
March 11— School Mass
March 9 - 13 Violence Awareness and Random
Act of Kindness Week
March 16 - 20 March Break
March 26—Six String Nation Performance
March 31—Terrific Kids
April 3— PA Day
April 5— Sunday Family Mass
April 9— School Mass Holy Thursday
April 10— Good Friday
April 13— Easter Holiday

Attendance Matters

Please ensure that all communication with regard to attendance comes directly to the office. Ms. McLean is responsible for the accurate record keeping of our registers and 'Safe Arrivals' requires that the school is made aware of a student's reason for absence as early as possible. While the agenda is a great tool for communicating between the classroom teacher and the home; attendance must be managed through the office. Your cooperation in this matter is greatly appreciated.

Dear St. Gregory Families

Communication between home and school remains an important priority for St. Gregory. Please note that regular posts about day to day activities and events at the school come through the classroom teacher and Fresh Grade. If you are not accessing Fresh Grade on a regular basis, reach out to the school or classroom teacher to learn more. We are also making regular use of School Messenger to send email to communicate important information. To ensure you are getting all information, please see that the school has your most up-to-date email address on file. We would also ask that you update any changes to cell phone or telephone contact information as well.

Follow the school's Twitter feed for up to date information and details around school events, closures, bus cancellations, etc. (@alcdsb_greg).

If you have any questions or concerns regarding communication with the school please feel free to contact me directly by calling the school or by emailing me at kyte@alcdsb.on.ca

Charlene Landry-Kyte



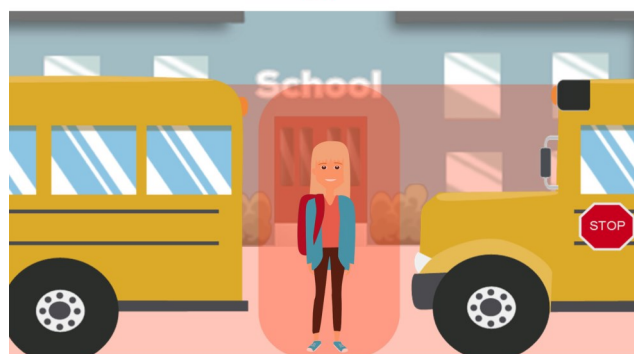
Cut and paste this link into your browser for the Parish Bulletin

<http://stgregoryparish.ca/publications/weeklybulletin.pdf>

THIS YEAR IN PHOTOSORDER YOUR YEARBOOK NOW (SHOOLCASHONLINE—\$15)



Are you sending kids into
the **danger zone**?



Everyone should be mindful of the
school bus danger zone
during pick-up and drop off.

stay 10 giant steps
away from the bus



TIP: this includes non-riders and parents

tri.board
smart routes. safe kids.

Safe Arrival & Departure

Nothing is more important to us than the safety of your children. **Please review safe street / road crossing expectations with your children.** Students arriving or departing by personal motor vehicle during posted bus loading zone times (8:00-8:30am and 2:00-2:45pm) should be dropped off/picked up on Church Street. Vehicles stopping and pedestrians crossing Owen street through bus lanes during the posted times is distracting to bus operators and unsafe. Pedestrians needing to cross Owen Street or Church Street can do so at the intersection of these two streets.



Anaphylaxis

A crucial, possibly life-threatening reminder to parents is that we do have students in our school who have severe nut allergies. Please refrain from sending food items to school that contain nuts. While this may seem simple, there are many foods where peanuts or nuts may be a hidden ingredient and so it is very important that you read labels. We realize this request poses an inconvenience for you when packing your child's lunch; however, the parents of these students wish to express sincere appreciation for your support and understanding.

Pediculosis (Head Lice)

It is important to check your children's hair for head lice and nits (eggs) as part of your weekly routine. If all families take the time to check and treat as required, it will minimize the number of cases. Also please remind your child(ren) not to share combs, brushes or hats.

Please Remember to Sign in when visiting the School and To Sign Children Out

Please remember to come to the office and sign-in when visiting the school or to Our secretary will be happy to call your son/daughters classroom to have them come to the office and meet you. This is a safe schools policy to insure the safety of our children. Thank you for your co-operation.

Bus Delays & Cancellations

Search for notices or sign up to be notified by email if your bus is running late or has been cancelled at <http://triboard.ca/>

Milk, pizza days, hot lunch, etc. will not be served on days when busses are cancelled. If you come to school on a 'snow day' pack a lunch.



Sharing Home Baked Goods

Unscheduled Student Pickup

The end of the school day is a very busy time. If you are picking up your child, please send a note to the classroom teacher or notify the office well in advance. This will avoid miscommunications and missed connections. Daily routines are very important to the learning environment. Numerous phone calls and drop ins at the office after 2 PM, from parents expecting to have schedules changed are very disruptive to classes.

Occasionally, some classrooms have special events or celebrations, and parents are invited to send in food items to be shared. Food to be shared within the school community must be prepared in an commercial setting. This means we may not bring in home baked goods to share with classmates. When bringing in a commercially produced item to share, such as a tray of squares from a grocery story or bakery, be sure to consult with the classroom teacher well in advance. Arrangements can also be made to access our school/parish kitchen for food preparation with your child's classroom teacher.



DISCOVER THE ENCHANTING WORLD OF ALICE IN WONDERLAND JR. AT ST GREGORY C.S.

St. Gregory C.S. Presents Disney's Alice in Wonderland Jr! This zany 60-minute musical is based on the 1951 Disney film and the novels by Lewis Carroll. The cast includes over 50 students in Grades 1-8, suitable for an audience of all ages. Show times will be May 7th & 8th from 7—8 p.m. and a Saturday Matinee on the 9th from 1—2 p.m.

Follow Alice as she navigates the curious world of Wonderland on her journey of self-discovery, encountering the ever-tardy White Rabbit, the grinning Cheshire Cat, a cool Caterpillar, a Mad Hatter, a Queen with a quite a temper, and many more of literature's beloved Wonderland characters. Whether this is your first experience with Alice or your hundredth, you'll lose your head (and your heart) for Alice in Wonderland JR.!

Please stay tuned for more information about the spring performances and how to purchase your tickets!

This week's Thursday rehearsal is cancelled.

